

ROTARY LIFT®
The World's Most Trusted Lift™



Four-Post General Service Lifts
Professional Automotive Service



Standard Features and Benefits

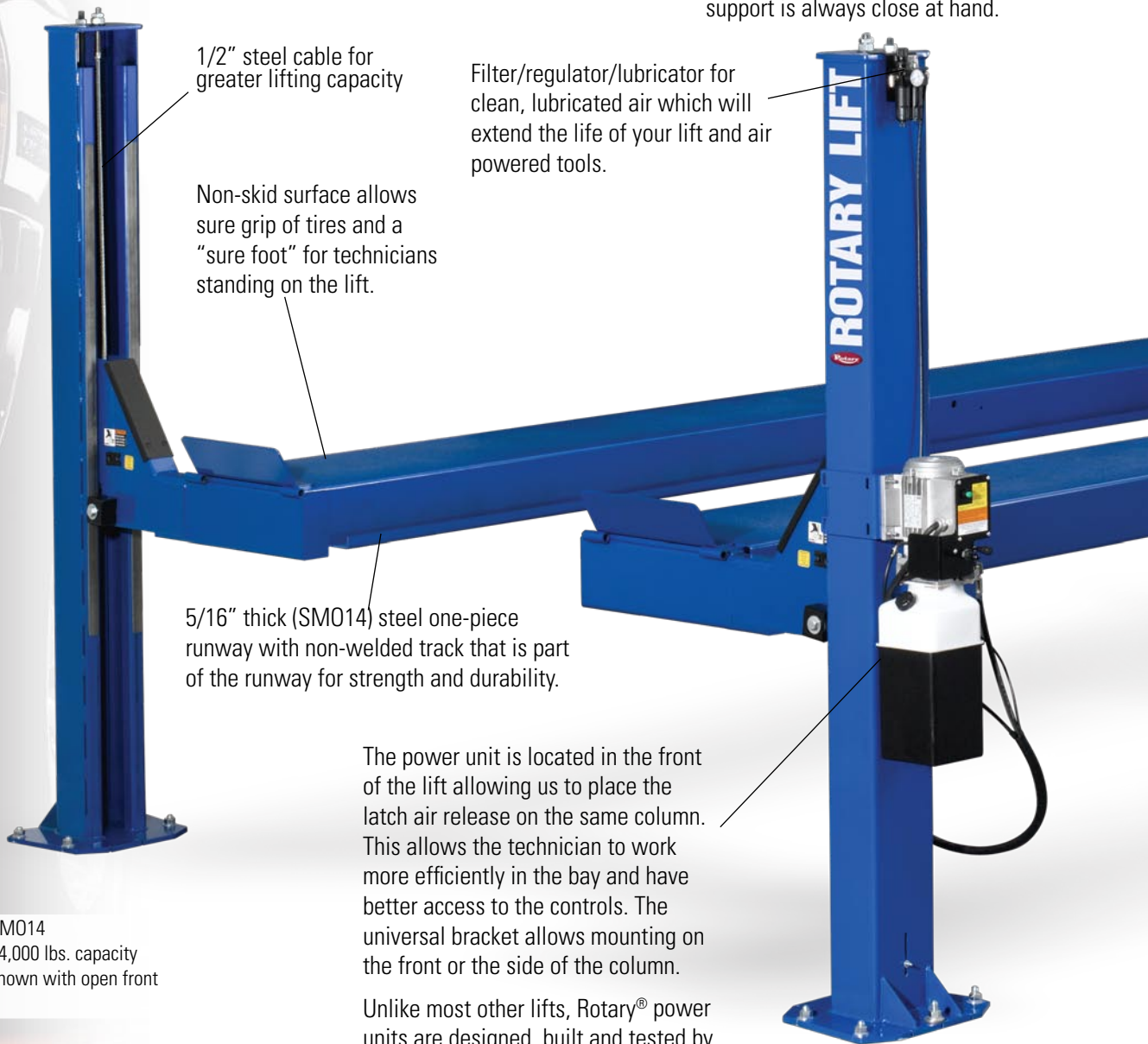


Engineered for Productivity

For decades, Rotary® has been the recognized leader in vehicle service lifts. This legendary reputation has set the standard for quality, durability, reliability and attention to safety throughout the automotive service market.

Service and Support

Our sales force attends intensive training on our products and the issues that face service repair facilities. Rotary representatives can help you evaluate which lift best meets your needs. With a world-wide network of highly-trained Rotary Authorized Installers and Distributors, service support is always close at hand.



1/2" steel cable for greater lifting capacity

Filter/regulator/lubricator for clean, lubricated air which will extend the life of your lift and air powered tools.

Non-skid surface allows sure grip of tires and a "sure foot" for technicians standing on the lift.

5/16" thick (SM014) steel one-piece runway with non-welded track that is part of the runway for strength and durability.

The power unit is located in the front of the lift allowing us to place the latch air release on the same column. This allows the technician to work more efficiently in the bay and have better access to the controls. The universal bracket allows mounting on the front or the side of the column.

Unlike most other lifts, Rotary® power units are designed, built and tested by Rotary, for Rotary lifts.

Shown: SM014

14,000 lbs. capacity

shown with open front



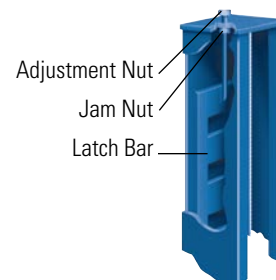


Lift Safety Standards

A majority of our general service four-post lifts are third party tested by ETL and certified by ALI to meet or exceed strict ANSI standards such as 1.5 times rated capacity load test, engagement lock test, cable cut and deformation tests. Be sure the lift you buy has the gold ALI/ETL label that assures your lift has been tested to meet these standards.

Redesigned one piece runways to handle higher capacity vehicles and longer wheelbases up to 212 1/2".

Adjustable latch bars ensure the runways are level when resting on the latch bars at any of the multiple locking positions.



A dual function Sentinel Lock™

system features a patented (U.S. Patent No. 6,446,757) slack cable guide arm that stays "on guard" to manage the lock latch. In a slack cable situation, the lock system kicks the lock into position. Fewer parts means less opportunity for service issues and more peace of mind.

Automatic ramp chocks engage when the lift is raised. Clearance holes allow the ramp chocks to clear runways bolts with less noise on vehicle approach.

Locating the cylinder (no chains) under the runway eliminates any opportunity for vehicle door or mirror damage.

Protective strips on ramp ends eliminate floor gouging.

assistPRO™
professional facility planning assistance



Rotary works directly with you, your local distributor, equipment program managers and architects to develop an efficient and capable service area to fit your needs. Our assistPRO™ service provides:

- Product selection and analysis
- Vehicle turning radius and traffic flow analysis

- Customized layout for each facility with final drawings in the format of your choice
- Detailed CAD blocks available to architects
- CSI three-part written specifications
- Continuing education for architects

Look for us in ARCAT's Spec Wizard.



ARCAT®

Optional Accessories

Rolling Jacks

Increase your service opportunities by lifting front, rear or all wheels off the runways for brake, tire, suspension and two or four-wheel alignment work.

Rotary Rolling Jacks Feature:

- Hydraulic operation with 2 locking positions
- Drop in rubber adapters made with high durometer rubber. Sizes: 1 1/2" (38mm) and 3" (76mm)
- Easy glide wheels roll smoothly in the track. A sweeper pushes debris away from the wheel.



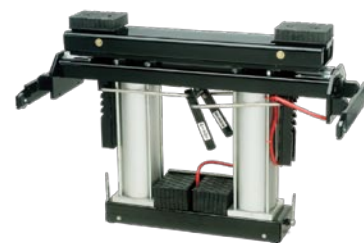
Shown: RJ7000
7,000 lbs. capacity
4,500 lbs. capacity also available



Shown: FC5710
15,000 lbs. capacity
9,000 lbs. capacity also available

Swing Air Jacks

Swing air jacks add versatility and utility to your lifts enabling technicians to do a wider variety of service work at their current locations.



Shown: SJ6000
6,000 lbs. capacity swing air jack
pivots and lays flat between the runways when not in use

Standard/Optional Features

Standard Feature	●
Optional Feature	○



Feature	SM14 14,000 lbs.	SM014 14,000 lbs.	SM101 10,000 lbs.	SM18 18,000 lbs.	SM300 30,000 lbs.	RFL25 25,000 lbs.
ALI Certified	●	●		●	●	
Open front or open rear design		●				
Cylinder located under the runway	●	●	●	●	●	●
Dual function Sentinel Lock™ System	●	●	●	●	●	●
Air filter/regulator/lubricator	●	●	●	●	○	○
Multiple runway lengths available	○	○		○	○	
Adjustable latch bars	●	●	●	●	●	●
One piece runway	●	●	●	●		
Power unit on front column	●	●		○	○	
Internal airline	○	○	○	○	●	○
Rolling jacks available	○	○	○	○	○	○
Bolt-on alignment kit available	○	○	○	○	○	



Four-Wheel Alignment Kit

Convert your general service four-post lift into an alignment lift that is compatible with the new technology 3-D alignment equipment on the market today. Comes with stainless steel turning radius gauges.



Oil Drain Pan

Low profile rolling drain pans with splash guard, drain valve and dust cap. An eight foot oil drain hose with quick connect fitting is also available.



Internal Airline

Internal airline connections let two rolling jacks operate simultaneously, and provides air outlet on the runway.



Ramp Kits

- Allows for drive-thru capability
- Oil resistant, non-skid coating
- Includes two ramps and hardware
- Extended length also available.



Removable Work Steps

Fits all four-post lifts. Support lugs bolt to runways (drilling and tapping required).



Additional Four-Post Lift Models

revolution

Revolution® brand four-post lifts are your source for residential storage and maintenance.

Professional grade lifts built by Rotary - specifically designed for the home enthusiast.

- Storage - Double your garage parking capacity
- Versatility - Store almost anything including lawn mowers, boats, bicycles etc. on top to make more room in your garage
- Two wheelbase options available



Shown: RFP7-XLT
7,000 lbs. capacity

Alignment Racks

- 14,000 lbs. capacity
- Includes two 7,000 lbs. capacity rolling jacks and an internal airline for organized, efficient operation
- Open front design available
- Air filter/regulator/lubricator keeps your air clean and regulated to extend the life of your air tools
- Recessed 45° turning radius gauges (4,500 lbs. capacity each) are made of 304 stainless steel for corrosion resistance
- Recessed 4-wheel steer slip plates
- Three wheelbase length options



Shown: AR014L
14,000 lbs. capacity

Heavy-Duty Four-Post Lifts

Rotary® Heavy-Duty Four-Post lifts are a great value and an investment that is easy to own and operate because they are engineered to perform and built to last. Our heavy-duty lifts accommodate a wide range of vehicles, making routine vehicle service and maintenance with a Rotary four-post lift just the ticket.

Take advantage of the quick set-up for undercarriage repairs and wheel service maintenance. These four-post lifts are proven, durable and require little to no maintenance. (Available capacities: 18,000, 30,000, 40,000, 50,000 and 60,000 lbs.)



Shown: 40000HDL
40,000 lbs. capacity

Four-Post General Service Specifications

Specifications

General Service

Model:		SM14	SM014	SM101
Max. Wheelbase*	S	158 1/2" (4026mm)	158 1/2" (4026mm)	
	L	182 1/2" (4636mm)	192 1/2" (4890mm)	245" (6223mm)
	EL	206 1/2" (5245mm)	212 1/2" (5397mm)	
A. Rise		73 3/4" (1873mm)	73 3/4" (1873mm)	73 3/4" (1873mm)
B. Length Overall†	S	18' 9" (5715mm)	19' 2" (5842mm)	
	L	20' 9" (6325mm)	22' (6706mm)	26' 10 3/4" (8198mm)
	EL	22' 9" (6934mm)	23' 8" (7214mm)	
C. Width Overall**†		11' 1" (3378mm)	11' 7" (3531mm)	10' 11 5/8" (3343mm)
D. Inside of Columns**		117 1/2" (2985mm)	117 1/2" (2985mm)	116" (2946mm)
E. Between Front and Rear Columns	S	171 7/8" (4366mm)	171" (4343mm)	
	L	195 7/8" (4975mm)	205" (5207mm)	258 7/8" (6575mm)
	EL	219 7/8" (5585mm)	225" (5715mm)	
F. Height of Columns		6' 10 1/8" (2086mm)	7' 11 3/16" (2418mm)	6' 10 1/8" (2086mm)
G. Width of Runways		20" (508mm)	20" (508mm)	20" (508mm)
H. Height of Runways		7" (178mm)	7" (178mm)	7" (178mm)
I. Width Between Runways		43" (1092mm)	43" (1092mm)	43" (1092mm)
Lifting Capacity		14,000 lbs. (6350kg)	14,000 lbs. (6350kg)	10,000 lbs. (4536kg)
Motor		2 HP	2 HP	2 HP
Voltage Single Phase		208v-230v	208v-230v	208v-230v
Time of Full Rise		55 seconds	65 seconds	55 seconds
Min. Bay Size	S	15' x 23' (4572 x 7010mm)	15' x 23' (4572 x 7010mm)	
	L	15' x 25' (4572 x 7620mm)	15' x 26' (4572 x 7925mm)	15' x 30' (4572 x 9144mm)
	EL	15' x 27' (4572 x 8230mm)	15' x 28' (4572 x 8534mm)	

* Maximum wheelbase is based on a tire diameter of 29 1/2" (749mm).

** Narrow bay models available. Consult factory for min. bay size before ordering.

† Length overall is 8" longer with power unit mounted on the front of the column.
Width is 8" wider with power unit mounted on the side of the column.

Identifying Model Numbers

Lift Type	Lift Capacity (x 1000)	Options
SM	14	S
SMO	14	EL

Examples:

SM14S = Standard Model Closed yoke
14,000 lbs. capacity lift with shorter length.

SMO14EL = Standard Model Open
yoke 14,000 lbs. capacity lift with
extended length

Lift Types:

SM.....Standard Model lift

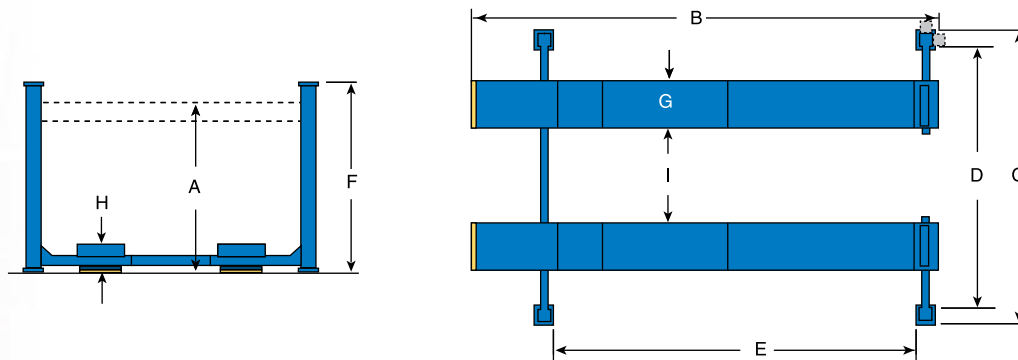
SMO.....Standard Model open end lift

Options:

L.....Standard Length

S.....Shorter Length

EL.....Extended Length



High Capacity Lifts



Shown: SM18L
18,000 lbs. capacity
with optional rolling jacks



Model:	SM18L SM18EL	SM30S SM30L SM30EL	RFL25
Maximum Wheelbase*	194" (4928mm) 230" (5842mm)	235" (5969mm) 271" (6883mm) 307" (7798mm)	163" (4140mm)
A. Rise	68" (1727mm)	68" (1727mm)	68" (1727mm)
B. Length Overall	22' 11 3/16" (6990mm) 25' 11 3/16" (7904mm)	25' 8 1/8" (7826mm) 28' 8 1/8" (8741mm) 31' 8 1/8" (9655mm)	22' 5" (6833mm)
C. Width Overall	11' 5 3/4" (3499mm)	12' 4 13/16" (3780mm)	12' 4 13/16" (3780mm)
D. Inside of Columns	121 1/2" (3086mm)	132" (3353mm)	132" (3353mm)
E. Between Columns	212" (5385mm) 248" (6299mm)	249" (6325mm) 285" (7239mm) 321" (8153mm)	177" (4496mm)
F. Height of Columns	6' 5 3/4" (1975mm)	7' 3/4" (2153mm)	7' 3/4" (2153mm)
G. Width of Runways	22" (559mm)	24" (610mm)	24" (610mm)
H. Height of Runways	7 1/2" (191mm)	8 3/8" (213mm)	8 3/8" (213mm)
I. Width Between Runways (min.)	43" (1092mm)	41" (1041mm)	13" (330mm)
J. Width Between Runways (max.)	46" (1168mm)	48" (1219mm)	48" (1219mm)
Lifting Capacity	18,000 lbs. (8165kg)	30,000 lbs. (13608kg)	25,000 lbs. (11340kg)
Motor	2 HP	4 HP	4 HP
Voltage Single Phase	208v-230v	208v-230v	208v-230v
Time of Full Rise	100 seconds	105 seconds	105 seconds

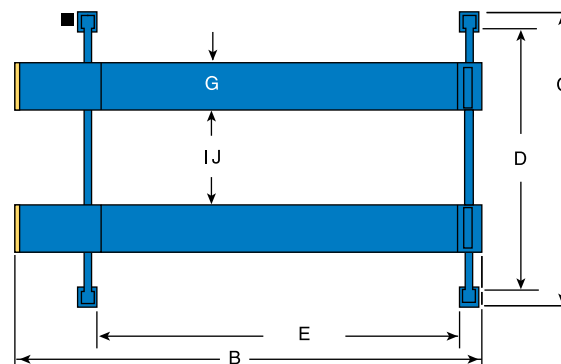
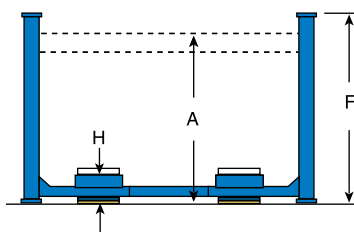


Shown: SM301
30,000 lbs. capacity
with optional rolling jacks



Min. Bay Size

16' x 27' (4877 x 8230mm)	16' x 30' (4877 x 9144mm)	16' x 30' (4877 x 9144mm)	16' x 33' (4877 x 10059mm)	16' x 26' (4577 x 7925mm)
16' x 30' (4877 x 9144mm)	16' x 36' (4577 x 10973mm)			



Standard color of lifts are blue unless otherwise noted. Red, yellow, gray and black are available at no additional charge. Additional colors are available, consult your Rotary® representative for details.

RAL5005	RAL3002	RAL1023	RAL7040	RAL9005



Rotary Lift® is the world leader in service bay productivity. We offer a broad range of solutions to make any service bay more productive.

For more information and a complete guide to our product offering, visit us on the web at rotarylif.com or contact your local distributor today.



Rotary Lift is an approved AIA provider assisting in continuing education credits. Contact us for training sessions in your area or online.



Rotary Lift is a proud member of SEMA.



Contract Holder
FSS Contract GS07F8953D



ROTARY LIFT®
The World's Most Trusted Lift



Rotary World Headquarters
2700 Lanier Drive
Madison, IN 47250, USA
www.rotarylif.com

North America Contact Information
Sales: p 800.640.5438
f 800.578.5438
e userlink@rotarylif.com
Tech. Support: p 800.445.5438
f 800.578.5438
e userlink@rotarylif.com

World Wide Contact Information
World Headquarters/USA: 1.812.273.1622
Canada: 1.905.812.9920
European Headquarters/Germany: +49.771.9233.0
United Kingdom: +44.178.747.7711
Australasia: +60.3.7660.0285
Latin America/Caribbean: 1.812.273.1622
Middle East/Northern Africa: +49.771.9233.0
Southern Africa: 1.812.273.1622



Lit# PAS_fourpost_generalservice_2008.04_EN
©2008 Rotary®, Printed in U.S.A., All Rights Reserved. Unless otherwise indicated, ROTARY, DOVER and all other trademarks are property of Dover Corporation and its affiliates.